

Roll: **20231019-20322**

Camera: **Samsung Galaxy A54 5G: SGA**

Film: **Digital**

Subject:

U3A Walk around Lambley CP.

Notes:

I was using my Canon EOS 5D MkIII with an old 50mm lens to save weight. These additional shots were taken with my mobile phone. I have been surprised at how good the phone images are, especially so in difficult conditions where the Canon fails. For the main shots see [20321](#)

People:

Clifford W Fulford.

Dates:

Dates and times are verified from original exif data.

Frames:

20231019_122419	20231019	12:24:19	Country walk.
20231019_122428	20231019	12:24:28	Country walk.
20231019_122449	20231019	12:24:49	Country walk.
20231019_122512	20231019	12:25:12	Self portrait on a country walk.
20231019_122716	20231019	12:27:16	Country walk.
20231019_122733	20231019	12:27:34	Country walk.
20231019_122735	20231019	12:27:35	Country walk.
20231019_122737	20231019	12:27:37	Country walk.
20231019_125258	20231019	12:52:59	Dropping down to Lambley..



20231019_122419 - Country walk.



20231019_122419.jpg



20231019_122428.jpg



20231019_122449.jpg



20231019_122512.jpg



20231019_122716.jpg



20231019_122733.jpg



20231019_122735.jpg



20231019_122737.jpg



20231019_125258.jpg



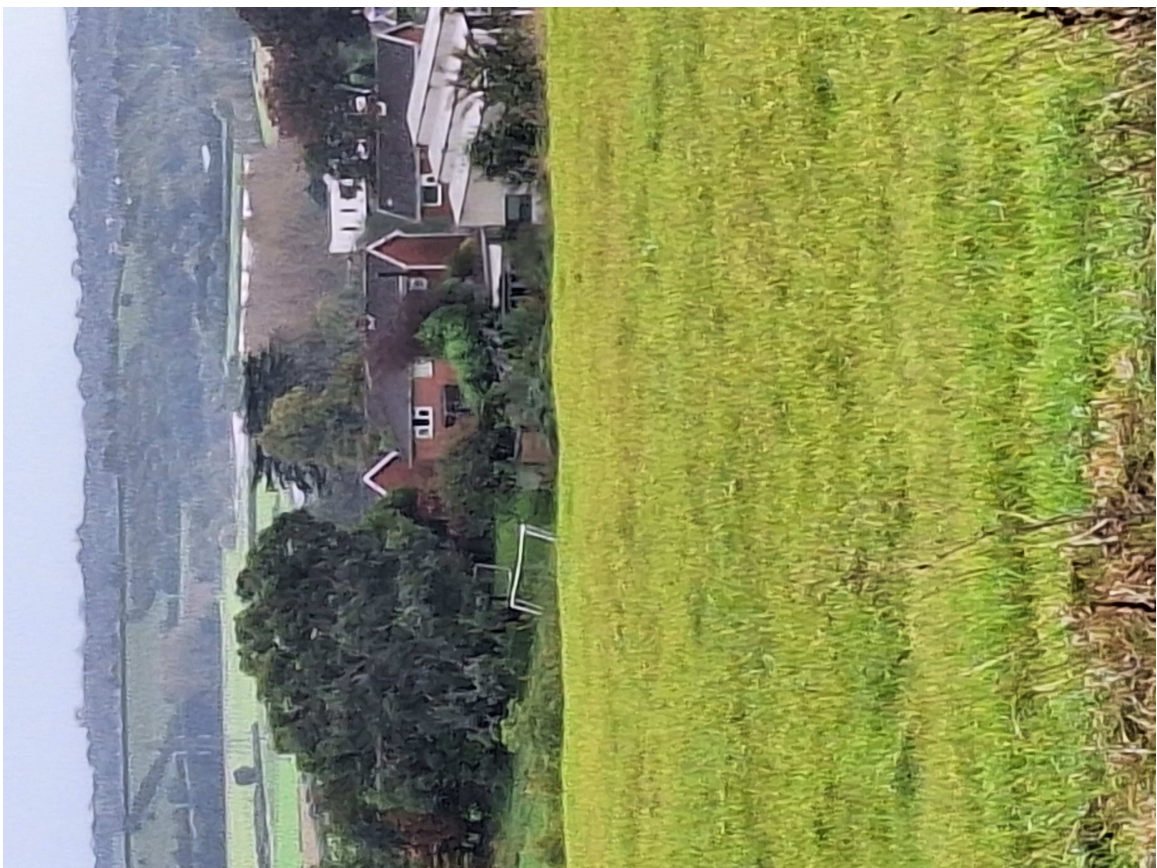
20231019_122428 - Country walk.



20231019_122512 - Self portrait on a country walk.



20231019_122733 - Country walk.



20231019_122737 - Country walk.



20231019_125258 - Dropping down to Lambley.