

Roll: **20210204-9110**

Camera: **Canon EOS 5D Mark III: E53**

Film: **Full frame digital**

**Subject:**

Stoke Bardolph & Netherfield Lagoons.

**Notes:**

An eleven mile walk starting from the Victoria Retail Park along the Ouse Dyke and then through Stoke Bardolph to the Ferry Boat Inn. I returned along the Trent to Netherfield Lagoons. The River was in flood and in places progress was difficult as the paths were under about 8" of water. Somewhere approaching Netherfield Lagoons there was a substantial Police team who tried to turn me back as they claimed it was the scene of an incident. As their tape was some way back from the water front I argued that the request to go back was unreasonable. I had walked 6 miles by that point and I argued that it was beyond my capability to walk that distance back. A young police woman suggested that I go back and take a footpath away from the river. On questioning she admitted that she didn't know where it was. I didn't either but it looked muddy and the light was beginning to fail I thought therefore the escapade would be highly ill advised. The argument then switch to the path being flooded and that the higher ground was overgrown and would be near impassible for an old man bent double to get under the thicket.

I said I would prefer to take my chances and after some jack the lad back chat one of them took the decision to let me try.

It was tricky, overgrown with brambles at boot level and tangle branches at shoulder height. In the end we had to take to the flooded path which was only by then a few inches deep and made to the nature reserve which proved to be as dull as ditch water.

Back in Netherfield I took a trip down memory lane trying to find the scene of my first real relationship with a girl called Shirley who I met there on Saturday nights to go to the pictures and then back to her parents house. Her Mum and Dad would go to bed as soon as Shirley got home and left us to make out on the sofa and listen to records in the front room.

I would often miss my but home and walk back to Nottingham and then back to Bridgford.

I have no knowledge at all of why I stopped seeing Shirley, I sure it was a premature and wrong headed move.

From Stoke Bardolph to Netherfield I had struggled with a loose left boot which avoided retying largely for reasons of my leaking bladder. This was a decision I continue to regret to this day as the consequence was tendinitis which put a stop to my running and to these walks. Tendinitis was followed by Plantar Fasciitis and then a popped calf muscle. I am only now, over a year later (March 2022) beginning to take walks longer than 2 or 3 miles long.

While musing of a bottle of Blue Monkey's Infinity plus 1 I wrote a more sentimental piece about trying to find a small piece of my past in Netherfield. I have I think also written of those events on Facebook.

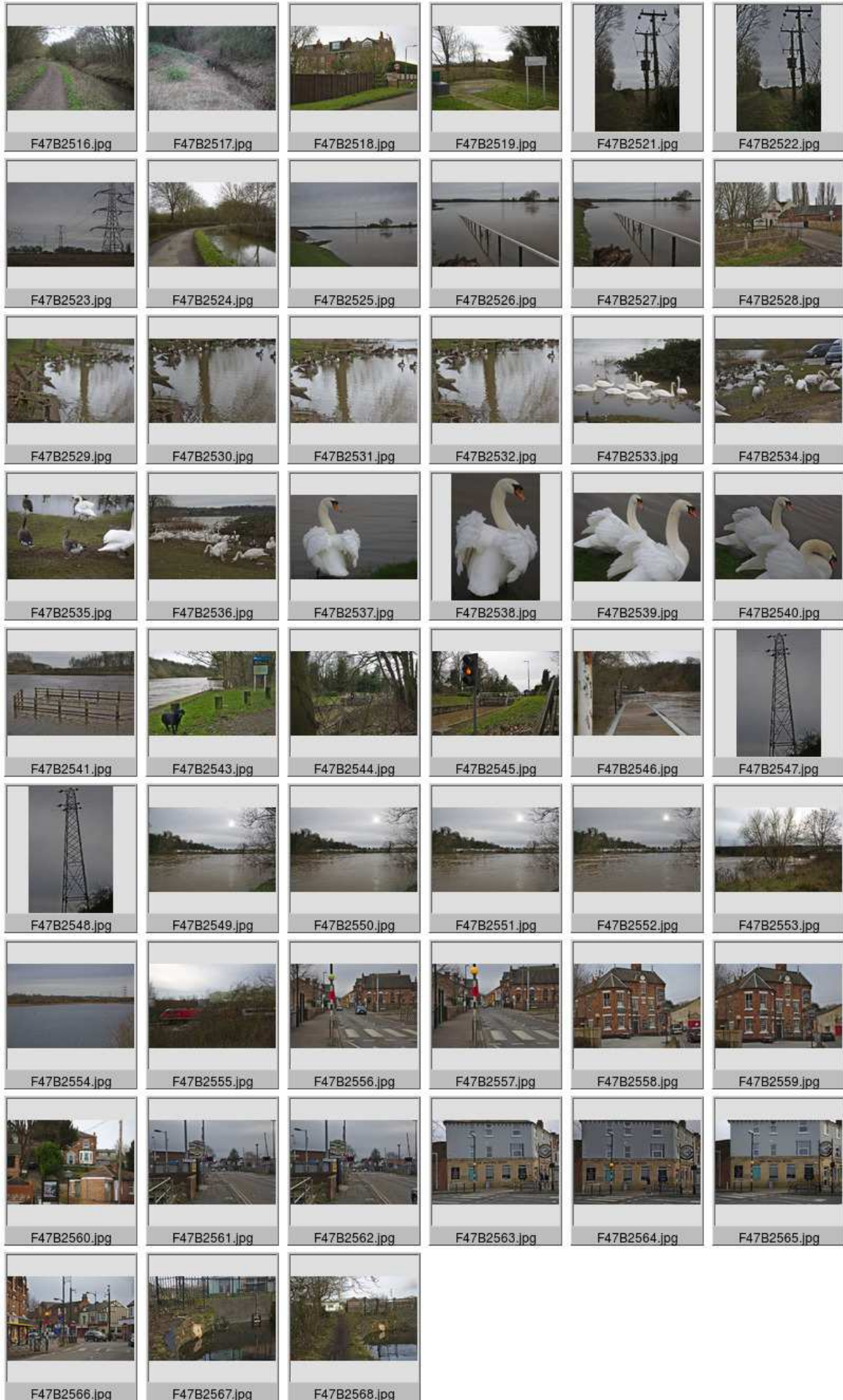
The final pair of pictures are, a little confusingly, at Trent Bridge No 1 at the start of the Grantham Canal. The willow tree here has for a number of years produced a quite stunning female figure that emerges around sunset but no more, the woodcutter has seen to that.

**See also:**

**<https://www.fulford.net/index.php/blogs/15-beer-biscuits/98-netherfield-lagoons>**

**Dates:**

Dates and times are verified from original exif data.



**Frames:**

F47B2516	20210131	13:04:20	Grimey Ouse.
F47B2517	20210131	13:05:57	Grimey Ouse.
F47B2518	20210131	13:26:31	Modern Cottages.
F47B2519	20210131	13:27:25	The Cottages.
F47B2521	20210131	13:28:25	Low Power Lines.
F47B2522	20210131	13:28:28	Low Power Lines.
F47B2523	20210131	13:35:23	Striding the farm.
F47B2524	20210131	13:35:39	High water in the ditch.
F47B2525	20210131	13:45:55	Pylons across the river.
F47B2526	20210131	13:46:26	Flooded banks.
F47B2527	20210131	13:46:55	Flooded banks.
F47B2528	20210131	13:47:11	Wacky Corner.
F47B2529	20210131	13:50:07	Terminal bench.
F47B2530	20210131	13:51:04	Terminal bench.
F47B2531	20210131	13:51:07	The better bench.
F47B2532	20210131	13:51:10	Birds and a bench.
F47B2533	20210131	13:52:28	Swans on their hols.
F47B2534	20210131	13:52:42	Swans and geese.
F47B2535	20210131	13:53:08	Goosey Goosey.
F47B2536	20210131	13:53:34	Swans on their hols.
F47B2537	20210131	14:07:13	Showing off.
F47B2538	20210131	14:07:29	Showing off.
F47B2539	20210131	14:07:40	The display.
F47B2540	20210131	14:07:50	The display.
F47B2541	20210131	14:08:45	Penning in the river.
F47B2543	20210131	14:11:49	Stoke Lock.
F47B2545	20210131	14:14:26	Lock with traffic lights.
F47B2546	20210131	14:25:40	River jetty.
F47B2547	20210131	14:30:05	Limited pylon.
F47B2548	20210131	14:30:05	Limited pylon.
F47B2549	20210131	14:34:41	Prefabs by the river.
F47B2550	20210131	14:34:50	Prefabs by the river.
F47B2551	20210131	14:34:50	Prefabs by the river.
F47B2552	20210131	14:35:00	Prefabs by the river.
F47B2553	20210131	14:54:13	Radcliffe railway bridge.
F47B2554	20210131	14:56:20	Netherfield Lagoons.
F47B2555	20210131	15:05:44	Waiting on line.
F47B2556	20210131	15:44:59	That famous crossing.
F47B2557	20210131	15:45:03	That famous crossing.
F47B2558	20210131	15:55:24	Closed for business.
F47B2559	20210131	15:55:26	Closed for business.
F47B2560	20210131	15:56:28	House on the Hill.
F47B2561	20210131	15:56:54	Gateway to heaven.
F47B2562	20210131	15:56:54	Gateway to heaven.
F47B2563	20210131	15:58:29	The Waiting Room.
F47B2564	20210131	15:58:33	The Waiting Room.
F47B2565	20210131	15:58:48	The Waiting Room.
F47B2566	20210131	16:00:02	Surprisingly busy.
F47B2567	20210204	11:55:00	Death of a Dryad.
F47B2568	20210204	11:55:57	Death of a Dryad.