

**Roll: 20210701-9134**

**Camera: Canon EOS 5D Mark III :5D3**

**Film: Full frame digital images.**

**Subject:**

Squirrels - U3A Peak Walk

**Notes:**

The new bird feeder from the National Trust was supposed to be squirrel resistant but my squirrels don't seem to have noticed. The squirrels feeding, litters the ground with the bits they don't want which then attract the pigeons. I really do need an air rifle so I can bag some really well fed tree and sky rats that ready for the pot in autumn.

The U3A walk started from Gradbach Mill which is still covid closed although they did open the gates for us. It was a difficult drive as my lens gave me blurred vision in the right eye and I had to stop and refit. Ten minutes later it happened again and I gave up and went back to my glasses.

The walk followed the River Dane (along the Dane Valley Way) to Danebridge and Wincle. Stopped at the brewery for tea and sandwiches although I stuck to the beer. Half of Wincle Brewery's session IPA which was excellent and surprisingly only £3.60 a pint.

Then a steep climb somewhere near Hanging Stone where the walk divided with some of us going on to Lud's Church (more properly called the Green Chapel). Max really struggled trying to climb out of the chasm and I thought at one point he wasn't going to make it. He also had trouble with some of the stiles.

Unfortunately the intended route from the Green Chapel was closed and we returned through the chasm to rejoin the others at what I think was Hanging Stone (didn't realise while I was there) where we had another break before returning to Gradbach Mill.

Some grumbling by Maureen and at least one other. "Not my idea of fun."

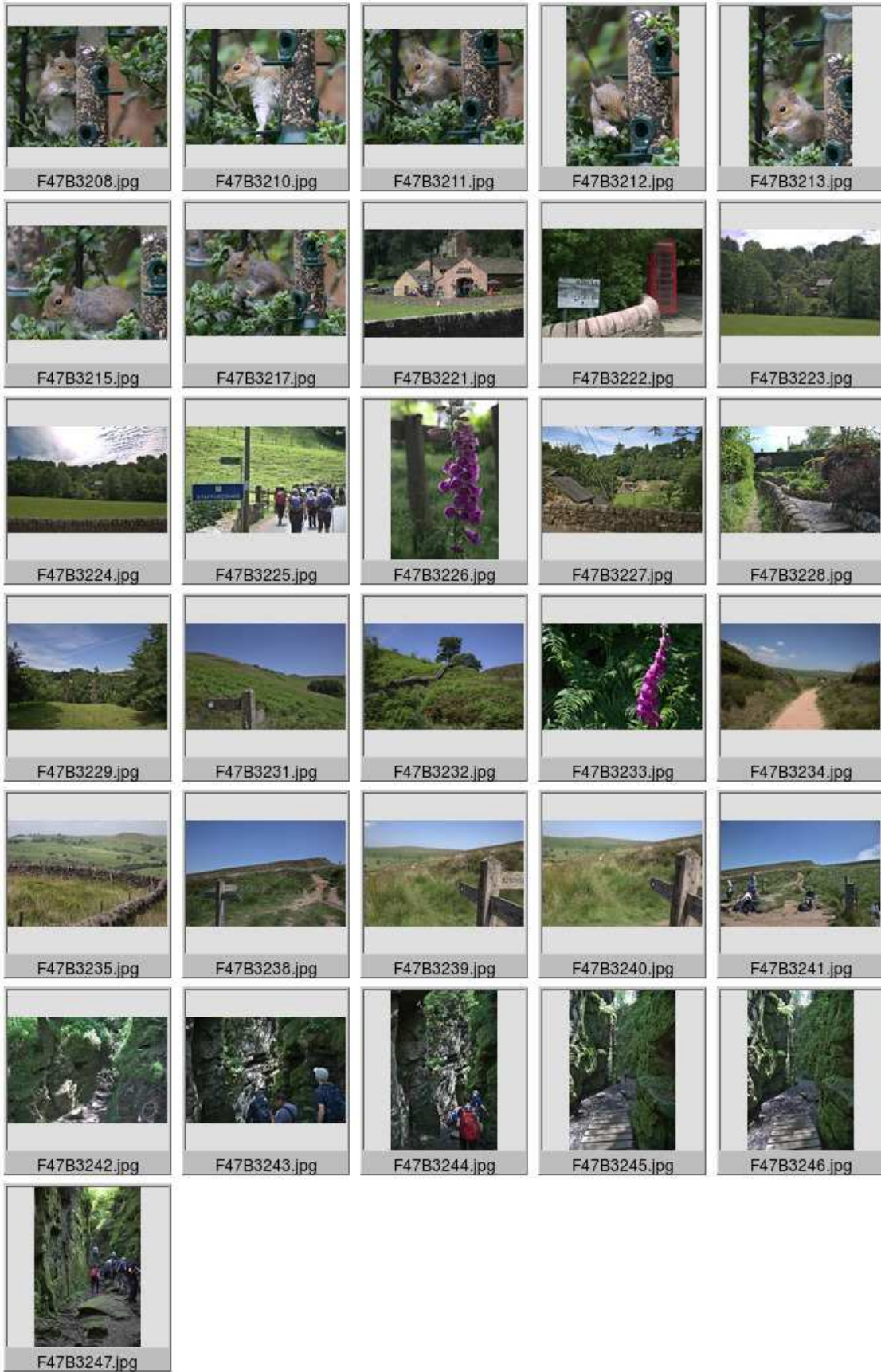
I was very tired. The tendinitis in my left foot hurt especially on broken ground. The drive back was exhausting, made much worse by Waze taking me back on a very unfamiliar route. It started well by going along a very narrow track to Flash but after that I had no idea what the plan was and I find that in itself excruciating. I've worked it out since and it went North on the A53 to Buxton then South on the A515 through Ashbourne to Sudbury then back to Nottingham on the A50. It must have added miles to the journey.

**People:**

U3A Peak Walks Group

**Dates:**

Dates and times are verified from original exif data.



**Frames:**

F47B3209	20210627	12:29:35	Squirrel on a Bird Feeder.
F47B3210	20210627	12:29:51	Squirrel on a Bird Feeder.
F47B3211	20210627	12:29:59	Squirrel on a Bird Feeder.
F47B3212	20210627	12:30:10	Squirrel on a Bird Feeder.
F47B3213	20210627	12:30:14	Squirrel on a Bird Feeder.
F47B3215	20210627	12:30:47	Squirrel on a Bird Feeder.
F47B3217	20210627	12:31:03	Squirrel on a Bird Feeder.
F47B3221	20210701	11:48:40	Wincle Brewery.
F47B3222	20210701	11:50:21	Wincle Telephone Kiosk - Scheduled for Demolition.
F47B3223	20210701	12:15:19	Danebridge from Wincle.
F47B3224	20210701	12:15:31	Danebridge from Wincle.
F47B3225	20210701	12:25:16	On the border - leaving Cheshire.
F47B3226	20210701	12:26:16	Fox Glove.
F47B3227	20210701	12:26:44	Wincle from Staffordshire.
F47B3228	20210701	12:28:24	Danebridge footpath and garden.
F47B3229	20210701	12:31:11	Staffordshire landscape.
F47B3231	20210701	13:06:12	Signpost.
F47B3232	20210701	13:06:31	Stone wall.
F47B3233	20210701	13:09:38	Fox Glove.
F47B3234	20210701	13:11:33	Footpath.
F47B3235	20210701	13:12:19	Stone Wall - Hangingstone Farm.
F47B3238	20210701	13:13:04	Signpost to the Roaches.
F47B3239	20210701	13:13:24	Signpost to the Roaches.
F47B3240	20210701	13:13:37	Signpost to the Roaches.
F47B3241	20210701	13:14:38	U3A Peak walks.
F47B3242	20210701	13:38:02	Green Chapel.
F47B3243	20210701	13:38:43	Green Chapel.
F47B3244	20210701	13:39:01	Green Chapel.
F47B3245	20210701	13:40:31	Green Chapel.
F47B3246	20210701	13:40:37	Green Chapel.
F47B3247	20210701	13:41:17	Green Chapel.



Squirrel on a Bird Feeder.





Wincle Brewery.



Danebridge from Wincle.





Wincle from Staffordshire.



Danebridge footpath and garden.





Staffordshire landscape.



Stone wall.





Fox Glove.



Signpost to the Roaches.





Green Chapel.





Green Chapel.





Green Chapel.