

Roll: **20210803-9135**

Camera: **Canon EOS 5D Mk III**

Film: **Digital** Format: Raw Processing: Dark Table

Subject:

U3A Photography Group - Newstead Abbey

Notes:

The photography group arranged to do a shoot at Newstead Abbey. I arrived a little late and did not find the others until around frame 264.

Shot selection was fairly random, just taking pictures of whatever caught the eye. I tried to include some people in the set in order to lesson the travel brochure style of the set.

After the main shoot I attempted to walk around the lake but was confused by the schematic map, particularly as I hadn't realised there were three lakes and I was walking around the Upper Lake which had not been included in the drawing.

The top end of the lake appeared to be impassible.

I found a battlement/folly on the Western shore in woodlands which faces out to the fort and coach house on the opposite shore. The folly does not appear in any of the guides nor is it marked on any of the tourist maps. It is barely detectable on the Ordnance Survey map. Presumably it is another part of the Byron's games.

I'm afraid I find the cumulative affect of these constructions, the forts, the waterfall and the many garden pastiches, rather tawdry and indicative of the somewhat dissolute lives lived by excessively wealthy families.

I did a quick canter around the Japanese and other gardens which I had missed out on earlier. Admittedly I did not allow myself time for contemplation but I could see little that reflected what I believe to be Japanese philosophy and aesthetics, just a collection of artifacts and a lot of rivulets generated by damming the Leen. Maybe I was just tired and crabby by that stage.

I had not noticed that my camera was set to shutter priority throughout and this combined with the lack stability led to some very poor shots particularly of the peacocks.

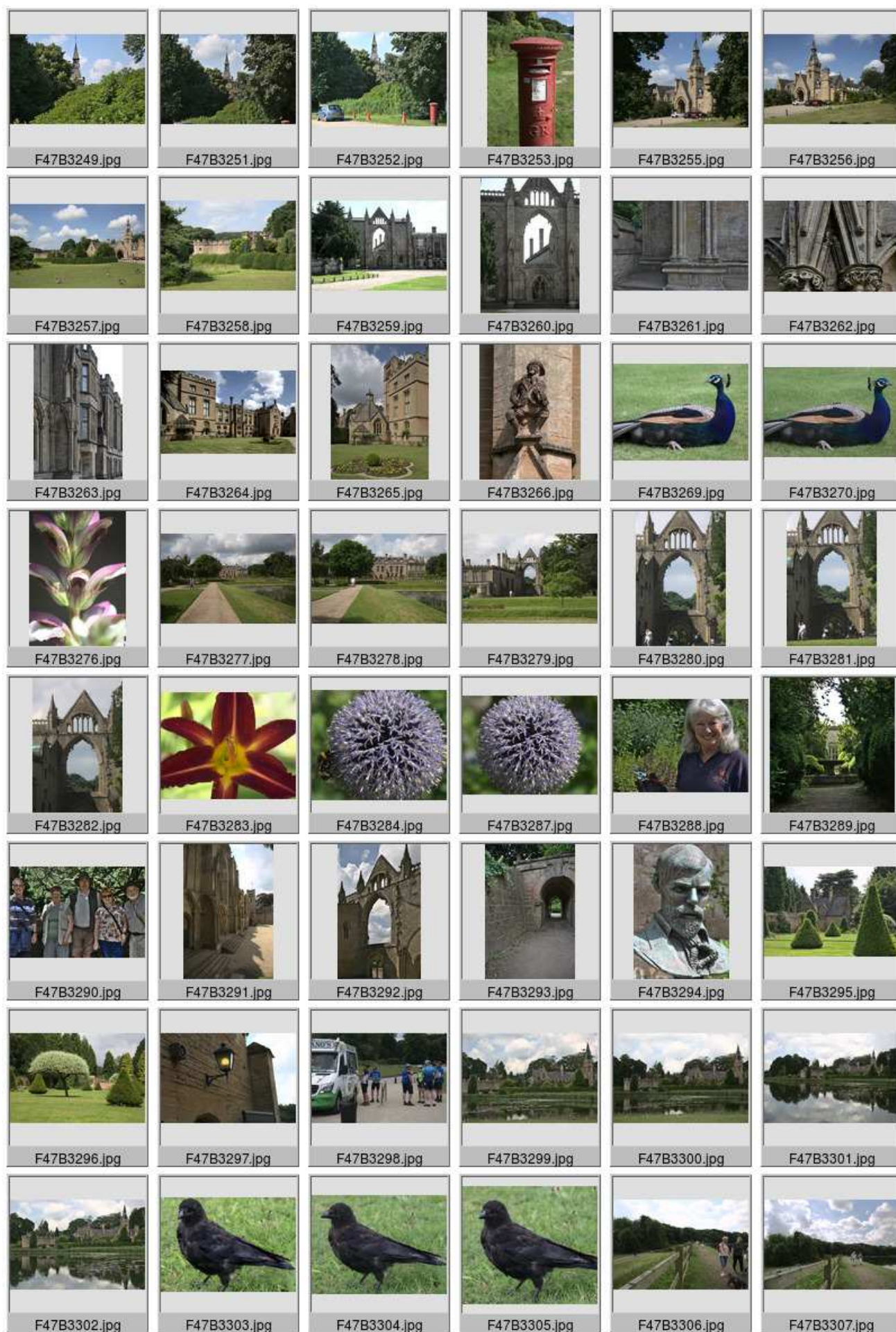
I had taken 93 shots of which I have retained 78 but I have little idea as yet as to which are my best shots, I suspect that none of them are any good.

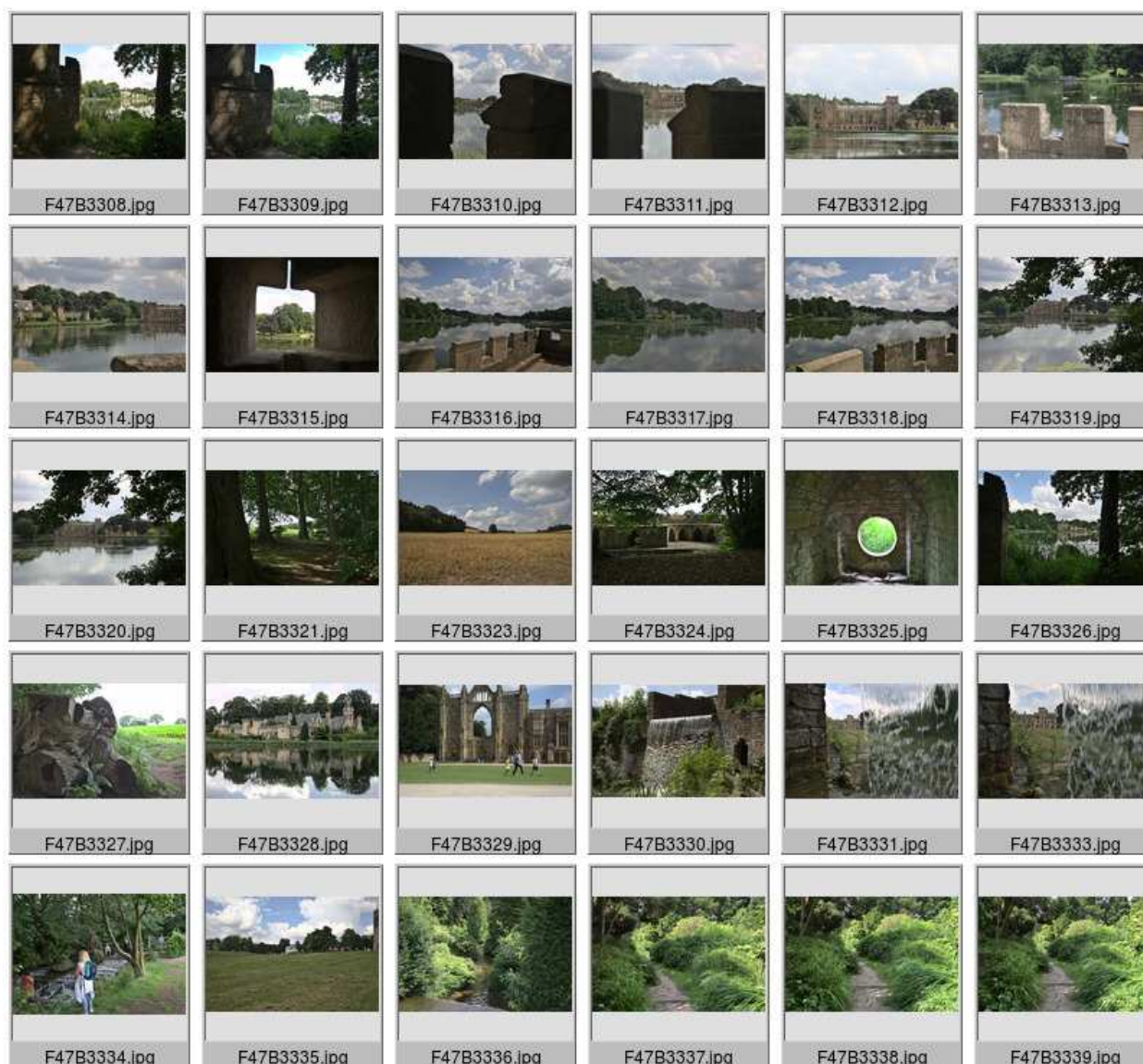
People:

Paco Saucedo, Lynne Tidmarsh, John Tidmarsh, Rachel Cooper, Clifford Wesley Fulford

Dates:

Dates and times are verified from original exif data.



**Frames:**

F47B3249 20210803 10:29:29 Coach House Tower.
 F47B3251 20210803 10:31:29 Coach House Tower.
 F47B3252 20210803 10:31:33 Pillar Box and Coach House Tower.
 F47B3253 20210803 10:32:55 Pillar Box.
 F47B3255 20210803 10:34:33 Coach House.
 F47B3256 20210803 10:35:10 Coach House.
 F47B3257 20210803 10:37:01 Coach House.
 F47B3258 20210803 10:37:05 Fort.
 F47B3259 20210803 10:39:21 Abbey Ruins.
 F47B3260 20210803 10:39:32 Abbey Ruins.
 F47B3261 20210803 10:42:31 Abbey seat.
 F47B3262 20210803 10:43:24 Abbey ruins.
 F47B3263 20210803 10:44:02 Newstead Abbey.
 F47B3264 20210803 11:31:20 Newstead Abbey.
 F47B3265 20210803 11:32:03 Newstead Abbey.
 F47B3266 20210803 11:32:25 Carving - Fiddle Player.
 F47B3269 20210803 11:34:47 Peacock.
 F47B3270 20210803 11:35:00 Peacock.
 F47B3276 20210803 11:37:48 Bears Breeches.
 F47B3277 20210803 11:41:17 Eagle Pond - Newstead Abbey.

F47B3278	20210803	11:41:51	Eagle Pond - Newstead Abbey.
F47B3279	20210803	11:44:46	Abbey ruins - Newstead Abbey.
F47B3280	20210803	11:45:44	Abbey Ruins - Newstead Abbey.
F47B3281	20210803	11:45:44	Abbey Ruins - Newstead Abbey.
F47B3282	20210803	11:45:50	Abbey Ruins - Newstead Abbey.
F47B3283	20210803	11:51:02	Lily - Newstead Abbey.
F47B3284	20210803	11:51:29	Globe Thistle & Bee - Newstead Abbey.
F47B3287	20210803	11:51:49	Globe Thistle - Newstead Abbey.
F47B3288	20210803	11:52:45	Gardener and Secateurs - Newstead Abbey.
F47B3289	20210803	11:55:29	Fountain - Monks Garden.
F47B3290	20210803	12:00:05	U3A Photography group.
F47B3291	20210803	12:05:22	Southern facade - Newstead Abbey.
F47B3292	20210803	12:06:20	Southern facade - Newstead Abbey.
F47B3293	20210803	12:11:26	Garden tunnel.
F47B3294	20210803	12:20:29	Bust of D.H. Lawrence.
F47B3295	20210803	12:21:40	Rose garden.
F47B3296	20210803	12:24:30	Rose garden.
F47B3297	20210803	12:37:32	Lamp.
F47B3298	20210803	12:38:05	Cyclists and ice cream.
F47B3299	20210803	12:39:21	Fort and carriage house.
F47B3300	20210803	12:39:25	Fort and carriage house.
F47B3301	20210803	12:40:02	Fort and carriage house.
F47B3302	20210803	12:40:09	Fort and carriage house.
F47B3303	20210803	12:40:55	Carrion crow.
F47B3304	20210803	12:41:00	Carrion crow.
F47B3305	20210803	12:41:02	Carrion crow.
F47B3306	20210803	12:41:20	Visitors - Upper Lake.
F47B3307	20210803	12:41:31	Visitors - Upper Lake.
F47B3308	20210803	12:49:05	Coach House and fort from Western Folly.
F47B3309	20210803	12:49:09	Coach House and fort from Western Folly.
F47B3310	20210803	12:49:56	Newstead Abbey from Western Folly.
F47B3311	20210803	12:50:22	Newstead Abbey from Western Folly.
F47B3312	20210803	12:50:31	Newstead Abbey from Western Folly.
F47B3313	20210803	12:50:44	Small Pier from Western Folly.
F47B3314	20210803	12:51:14	Fort and Abbey from Western Folly.
F47B3315	20210803	12:51:42	View from western folly cannon port.
F47B3316	20210803	12:51:57	View east from western folly battlements.
F47B3317	20210803	12:52:24	View east from western folly battlements.
F47B3318	20210803	12:52:30	View East from Western Folly Battlements.
F47B3319	20210803	12:53:07	Newstead Abbey western folly battlements.
F47B3320	20210803	12:53:15	Newstead Abbey western folly battlements.
F47B3321	20210803	12:54:29	Woodland and fields.
F47B3323	20210803	13:04:57	Cornfield.
F47B3324	20210803	13:26:38	Newstead Abbey western folly.
F47B3325	20210803	13:27:19	Cannon port Newstead Abbey folly.
F47B3326	20210803	13:28:11	Coach house and fort from western folly.
F47B3327	20210803	13:29:18	Felled tree stump.
F47B3328	20210803	13:34:25	Coach house and fort from western folly.
F47B3329	20210803	13:36:04	Western facade priory ruins.
F47B3330	20210803	13:40:42	Waterfall - Newstead Abbey.
F47B3331	20210803	13:41:44	Newstead Abbey through a waterfall.
F47B3333	20210803	13:41:55	Newstead Abbey through the waterfall.
F47B3334	20210803	13:53:06	Small weir on River Leen.
F47B3335	20210803	13:54:13	Iced cream van - Newstead Abbey.
F47B3336	20210803	14:03:06	Japanese garden.
F47B3337	20210803	14:05:43	Japanese garden.
F47B3338	20210803	14:05:47	Japanese garden.
F47B3339	20210803	14:05:48	Japanese garden.



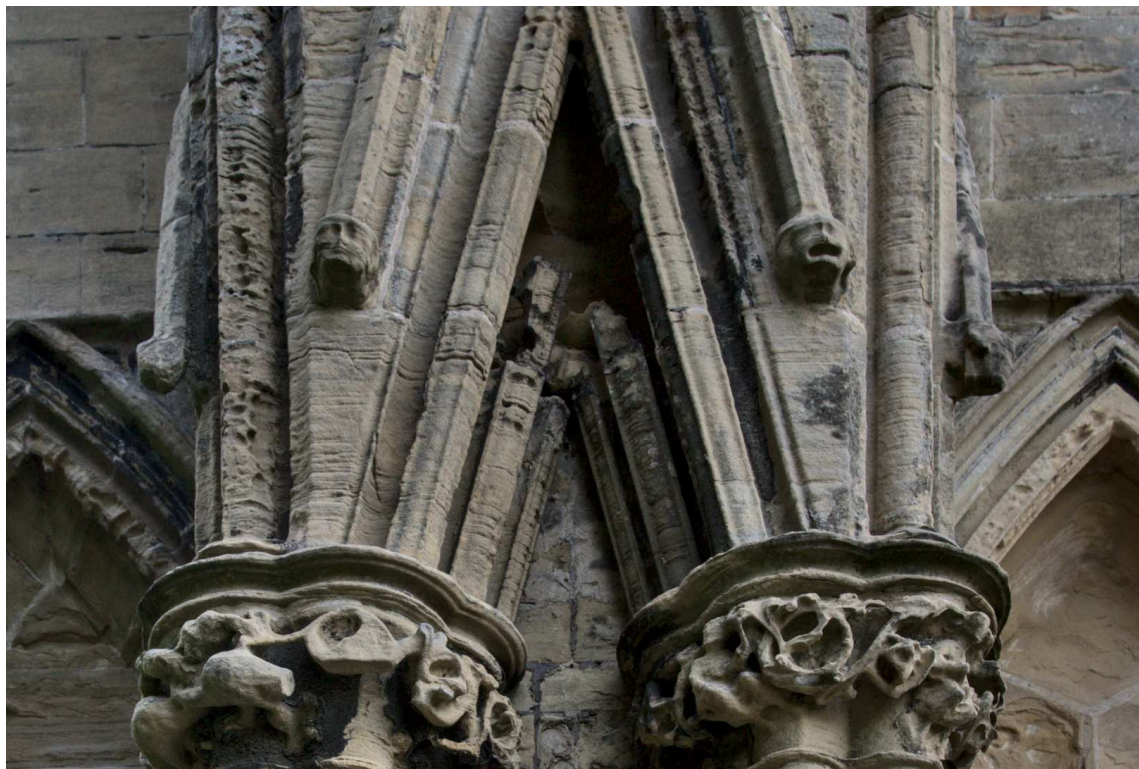
Pillar Box.



Coach House.



Fort.



Abbey ruins.



Eagle Pond - Newstead Abbey.



Lily - Newstead Abbey.



Globe Thistle & Bee - Newstead Abbey.



Gardener and Secateurs - Newstead Abbey.



U3A Photography group.



Fountain - Monks Garden.



Southern facade - Newstead Abbey.



Bust of D.H. Lawrence.



Rose garden.



Fort and carriage house.



Carrion crow.



Coach House and fort from Western Folly.



Fort and Abbey from Western Folly.



View from western folly cannon port.



Cornfield.



Cannon port Newstead Abbey folly.



Felled tree stump.



Coach house and fort from western folly.



Japanese garden.



Japanese garden.