

Roll: **20211031-9147**

Camera: **Canon EOS 5D Mark III: E53**

Film: **Full frame digital - RAW**

Subject:

Hawkshead.

Notes:

Joseph had been reluctant to go away on holiday with us for a number of years, this combined with Covid 19 lock down had led to this being the first holiday we have booked for three years.

The cottage was in Wordsworth Street, Hawkshead. I thought I had previously visited Hawkshead but after going there on this occasion I was convinced I had not.

The husband of Sarah (one Rahel's family friends) died two or three weeks before we were booked to go and Rahel was conflicted about attending the funeral. Sarah's initial plan to fly the body back to Ethiopia was abandoned. Days turned to weeks and no arrangements had been made, I think on the Thursday Rahel was finally told that it would take place the following Monday, she continued however to pack for the holiday. Given that Rahel felt under pressure to attend I offered to talk to Sarah myself and explain that we were away that week. Friday morning as I was about to load the car, Rahel announced that she was going to the funeral.

Furious at first, after taking a walk with the dog I calmed down and realised that I would probably enjoy the holiday more on my own, free of anxieties such as who had followed us meaning her harm, how pubs were poisoning her drinks and her food, etc. So I paid money into Rahel's account to pay for the tickets to London, gifts and sundries and set off to the Lakes alone.

It was a very long drive to Hawkshead. Waze was initially set to avoid motorways but after 3 hours of slow progress I changed the settings. From that point on the journey got much slower and I found myself trapped on the M6 moving at walking pace.

Total travel time was 6 hours but remarkably I still felt fresh and awake on arrival. I had particularly enjoyed the last segment of the journey travelling at pace through the narrow twisty lanes. I think the key was having good vision for the first time in years with the scleral lenses not only working but staying in my eyes.

The cottage, Spinner's Loft was an absolute knockout. A loft conversion accessed from a narrow, cobbled, back lane in the centre of Hawkshead. The building fronted on to the square of Main Street facing the Coop and above a jewellers, called Tiger's Eye.

I visited two of the pubs, the Red Lion and the Queens Head, both beautiful buildings. The Queens Head, claimed staff shortages and served food only to residents. The beer, "Robinsons" was pretty awful. I wanted to go to the Kings Arms which I could see from the window of the main room of Spinners' Loft but it was packed both inside and out and I thought it would be too much to ask of Max. Later there appeared to be a band playing at the Kings Arms, very loudly, which went on until about 11:30.

Max had slept most of the way up and on arrival threw himself down on a dog bed that was already there and slept again. He was very calm throughout the holiday and happy to stay in the main room when I went to bed, unlike when we are at home where he cries constantly if I am not very near by.

Saturday was spent pottering about getting to know the village, taking pictures in the Church yard, getting in a few groceries etc and visiting the pubs. I also bought some maps and walking guides in the local post office. I was happily surprised to find the village had a co-op, a post office, a chemists, a primary school, a doctors surgery and four pubs not including the tourist novelty bars and restaurants. There were a number of tourist shops, cafes and the large Hawkshead outdoor clothiers. There is also a National Trust Beatrix Potter museum and the Grammar school attended by William Wordsworth. Ann Tyson's cottage where Wordsworth stayed while attending the school is stated, many a time and oft to be in Wordsworth Street (as is Spinners' Loft) but actually at the top of Wordsworth Street it is necessary to turn right into Vicarage Lane to find it, a few yards away. The cottage is run as a bed and breakfast establishment. Wordsworth street was formerly called Leather, Rag and Putty Street which presumably refers the trades that were carried out there.

I felt unable to tour the Grammar School or the Beatrix Potter museum as Max has in recent weeks become prone to whining and barking if left outside any premises for more than a very few minutes.

Sunday, after breakfast we set off on a circular walk to Esthwaite Water. I was not optimistic regarding Max's participation but he did amazingly well up into Grizedale Forest to Sweetenthwaite Hill on Hawkshead Moor. We had a long break at that stage while I experimented with the camera mounted on the tripod. When we set off again Max seemed in some considerable trouble. I think the problem was that he had got cold and his joints were hurting. I gave him another paracetamol and things improved after half an hour or so but he continued to be slower and less enthusiastic.

The scenery took my breath away over and over again. It far exceeded my expectations given the relatively low altitude.

I was disappointed that on our return to Hawkshead, the King's Arms had remained closed. Enquiries at the Red Lion revealed that Friday had been a celebration of the present incumbent giving up the tenancy. Sadly it was not to open again during my stay.

People:

Clifford W. Fulford

Dates:

Dates and times are verified from original exif data corrected for GMT and camera clock running 16 minutes slow.

Frames:

F47B3616	20211030	10:53:16	View from Spinners' Loft doorstep.
F47B3617	20211030	10:53:37	View from Spinners' Loft doorstep.
F47B3619	20211030	10:53:44	View from Spinners' Loft doorstep.
F47B3620	20211030	10:57:36	Spinner's Loft from Main Street Square.
F47B3621	20211030	10:58:11	Main Street and Queen's Head.
F47B3622	20211030	11:15:10	Hawkshead from the churchyard.
F47B3623	20211030	11:15:27	The Square from the churchyard.
F47B3624	20211030	11:15:37	Hawkshead from the churchyard.
F47B3625	20211030	11:15:49	Hawkshead from churchyard.
F47B3626	20211030	11:16:59	Monument and Hawkshead from churchyard.
F47B3627	20211030	11:18:06	St. Michael and All Angels.
F47B3628	20211030	11:18:49	St. Michael and All Angels.
F47B3629	20211030	11:21:54	Church door stuffed with lambs wool.
F47B3630	20211030	11:28:14	Recent graves in churchyard.
F47B3631	20211030	11:29:07	Gravestones in churchyard.
F47B3632	20211030	11:29:18	Gravestones in churchyard.
F47B3633	20211030	11:31:09	Gravestones in churchyard.
F47B3634	20211030	11:31:30	Gravestones in churchyard.
F47B3635	20211030	11:37:23	Gravestones in churchyard.
F47B3636	20211030	11:37:39	Gravestones in churchyard and hills beyond.
F47B3637	20211030	11:44:26	Gravestones in churchyard.
F47B3638	20211030	11:45:23	Walk in the church yard.
F47B3639	20211030	11:45:34	Walk in the church yard.
F47B3640	20211030	11:46:20	Walk in the church yard.
F47B3642	20211030	11:46:45	Walk in the church yard.
F47B3643	20211030	11:48:16	Steps in the church yard.
F47B3644	20211030	11:49:28	St. Michael and All Angels.
F47B3645	20211030	11:49:37	St. Michael and All Angels.
F47B3646	20211030	11:49:54	St. Michael and All Angels.
F47B3647	20211030	11:56:10	St. Michael and All Angels.
F47B3648	20211030	11:59:29	Hawkshead Grammar School Founded 1585.
F47B3649	20211030	12:00:31	Hawkshead Grammar School Founded 1585.
F47B3650	20211030	12:33:58	Kittchen Bar and Brew.
F47B3651	20211030	12:34:00	Kittchen Bar and Brew.
F47B3652	20211030	12:34:24	Kittchen Bar and Brew.
F47B3653	20211030	12:35:23	Queens Head.
F47B3654	20211030	12:35:33	Queens Head.

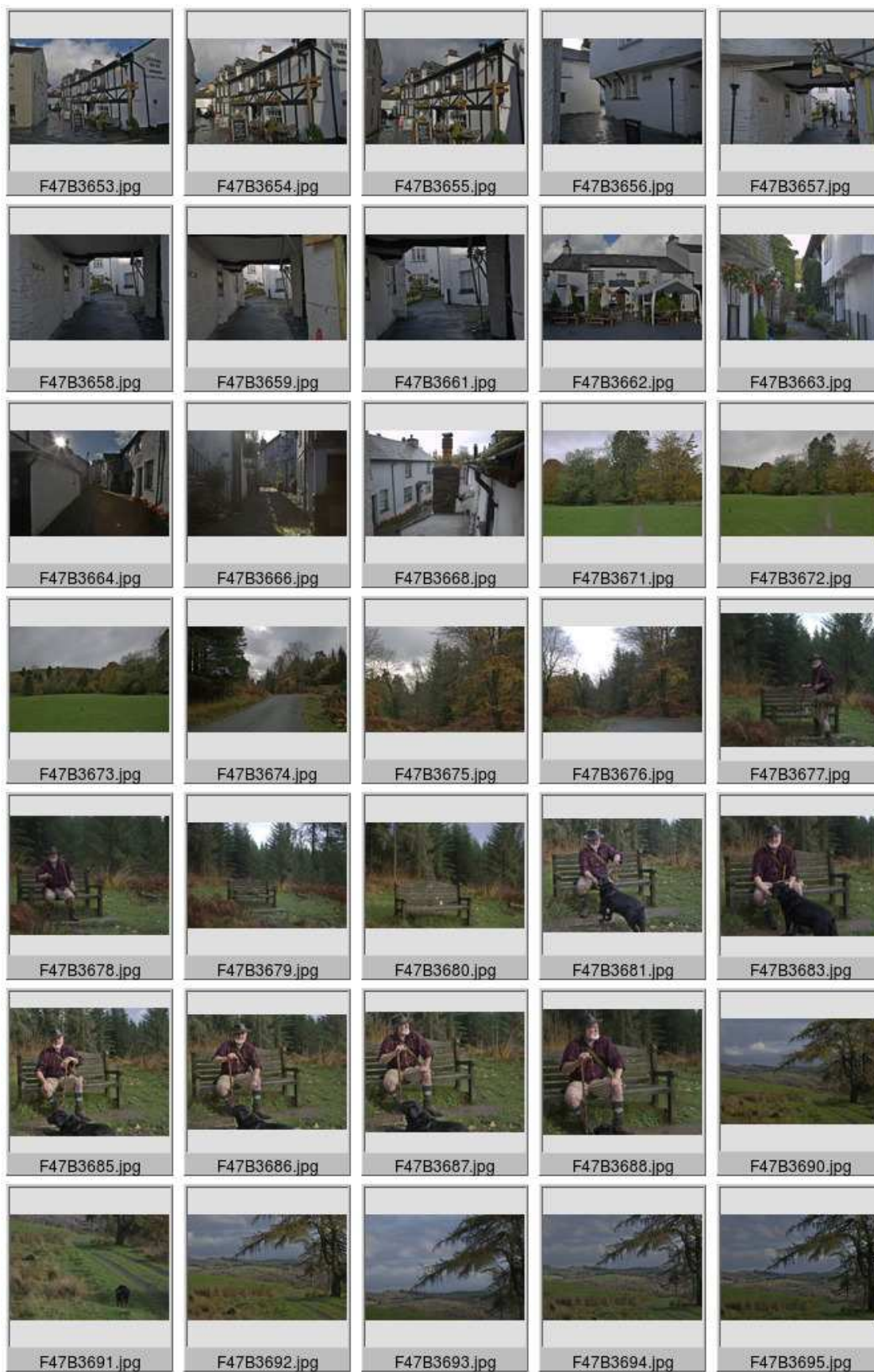
F47B3655	20211030	12:35:55	Queens Head.
F47B3656	20211030	12:50:16	Jettied walls Hawkshead.
F47B3657	20211030	12:50:31	Bridged cottages, Vicarage Lane.
F47B3658	20211030	12:51:51	Bridged cottages, Vicarage Lane.
F47B3659	20211030	12:51:59	Bridged cottages, Vicarage Lane.
F47B3661	20211030	12:52:01	Bridged cottages, Vicarage Lane.
F47B3662	20211030	13:04:40	The Kings Arms Hotel, The Square.
F47B3663	20211030	13:05:22	Cottages.
F47B3664	20211030	14:29:14	Wordsworth Street (Formerly Leather, Rag and Putty Street).
F47B3666	20211030	14:29:37	Wordsworth Street (Formerly Leather, Rag and Putty Street).
F47B3668	20211031	08:55:32	Wordsworth Street (Formerly Leather, Rag and Putty Street), view from Spinners' Loft.
F47B3671	20211031	12:43:12	Stand of trees - foot path to the Vicarage.
F47B3672	20211031	12:43:22	Stand of trees - footpath to the Vicarage.
F47B3673	20211031	12:43:34	Stand of trees footpath to the Vicarage.
F47B3674	20211031	13:41:33	Sweetenthwaite Hill.
F47B3675	20211031	13:43:53	Boscage, Sweetenthwaite Hill.
F47B3676	20211031	13:45:04	Boscage, Sweetenthwaite Hill.
F47B3677	20211031	13:47:30	Man and a bench.
F47B3678	20211031	13:48:24	Man and a bench.
F47B3679	20211031	13:51:19	Bag on a bench.
F47B3680	20211031	13:52:39	Bench in a forest.
F47B3681	20211031	13:55:00	Man, dog and bench.
F47B3683	20211031	13:55:32	Man, dog and bench.
F47B3685	20211031	13:56:01	Man, dog and bench.
F47B3686	20211031	13:56:14	Man, dog and bench.
F47B3687	20211031	13:56:21	Man, dog and bench.
F47B3688	20211031	13:56:34	Man, dog and bench.
F47B3690	20211031	14:16:38	Tree on Hawkshead Moor.
F47B3691	20211031	14:17:08	Tree on Hawkshead Moor.
F47B3692	20211031	14:17:31	Tree on Hawkshead Moor.
F47B3693	20211031	14:18:19	Tree on Hawkshead Moor.
F47B3694	20211031	14:18:27	Tree on Hawkshead Moor.
F47B3695	20211031	14:18:35	Tree on Hawkshead Moor.
F47B3696	20211031	14:18:59	Tree on Hawkshead Moor.
F47B3697	20211031	14:19:16	Tree on Hawkshead Moor.
F47B3699	20211031	14:19:48	Tree on Hawkshead Moor.
F47B3700	20211031	14:20:46	Tree on Hawkshead Moor.
F47B3701	20211031	14:21:04	Tree on Hawkshead Moor.
F47B3702	20211031	14:21:27	Tree on Hawkshead Moor.
F47B3703	20211031	14:23:57	Tree on Hawkshead Moor.
F47B3705	20211031	14:25:33	Tree on Hawkshead Moor.
F47B3706	20211031	14:29:54	Hawkshead from Moor Top.
F47B3707	20211031	14:29:59	Hawkshead from Moor Top.
F47B3708	20211031	14:30:13	Hawkshead from Moor Top.
F47B3709	20211031	14:32:18	Colthouse Heights from Hawkshead Moor Top.
F47B3710	20211031	14:38:37	Esthwaite Water.
F47B3712	20211031	14:39:00	Esthwaite Water.
F47B3713	20211031	14:39:48	Hawkshead and Esthwaite Water.
F47B3714	20211031	14:40:53	Tree.
F47B3715	20211031	14:43:53	Tree.
F47B3716	20211031	14:44:18	Tree.
F47B3717	20211031	14:44:22	Tree.
F47B3718	20211031	14:44:55	Tree.
F47B3719	20211031	14:46:00	The high fells.
F47B3720	20211031	14:56:32	Woods near Roger Ground.
F47B3721	20211031	15:12:32	Herdwick Sheep.
F47B3722	20211031	15:12:36	Herdwick Sheep.
F47B3723	20211031	15:12:53	Herdwick Sheep.

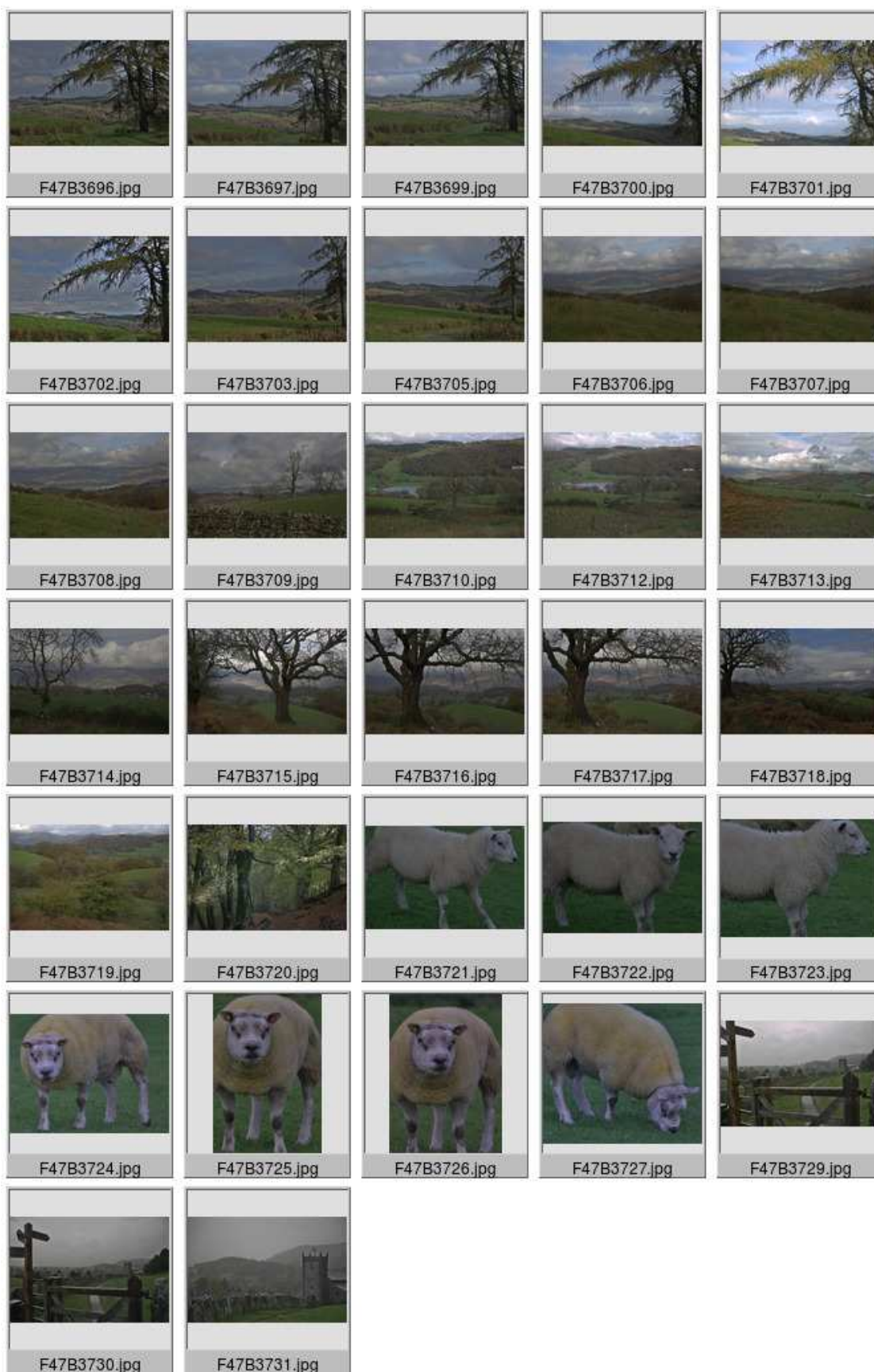
F47B3724 20211031 15:13:02 Herdwick Sheep.
F47B3725 20211031 15:13:04 Herdwick Sheep.
F47B3726 20211031 15:13:09 Herdwick Sheep.
F47B3727 20211031 15:13:40 Herdwick Sheep.
F47B3729 20211031 15:36:57 Footpath to Hawkshead in the rain.
F47B3730 20211031 15:37:12 Footpath to Hawkshead in the rain.
F47B3731 20211031 15:37:33 Church in the rain.



Wordsworth Street (Formerly Leather, Rag and Putty Street), view from Spinners' Loft.









Main Street and Queen's Head.



Hawkshead from the churchyard.



The Square from the churchyard.



Hawkshead from the churchyard.



Monument and Hawkshead from churchyard.



St. Michael and All Angels.



Church door stuffed with lambs wool.



Recent graves in churchyard.



Gravestones in churchyard.



Steps in the church yard.



St. Michael and All Angels.



Hawkshead Grammar School Founded 1585.



Kittchen Bar and Brew.



Queens Head.



Jettied walls Hawkshead.



Bridged cottages, Vicarage Lane.



Bridged cottages, Vicarage Lane.



The Kings Arms Hotel, The Square.



Cottages.



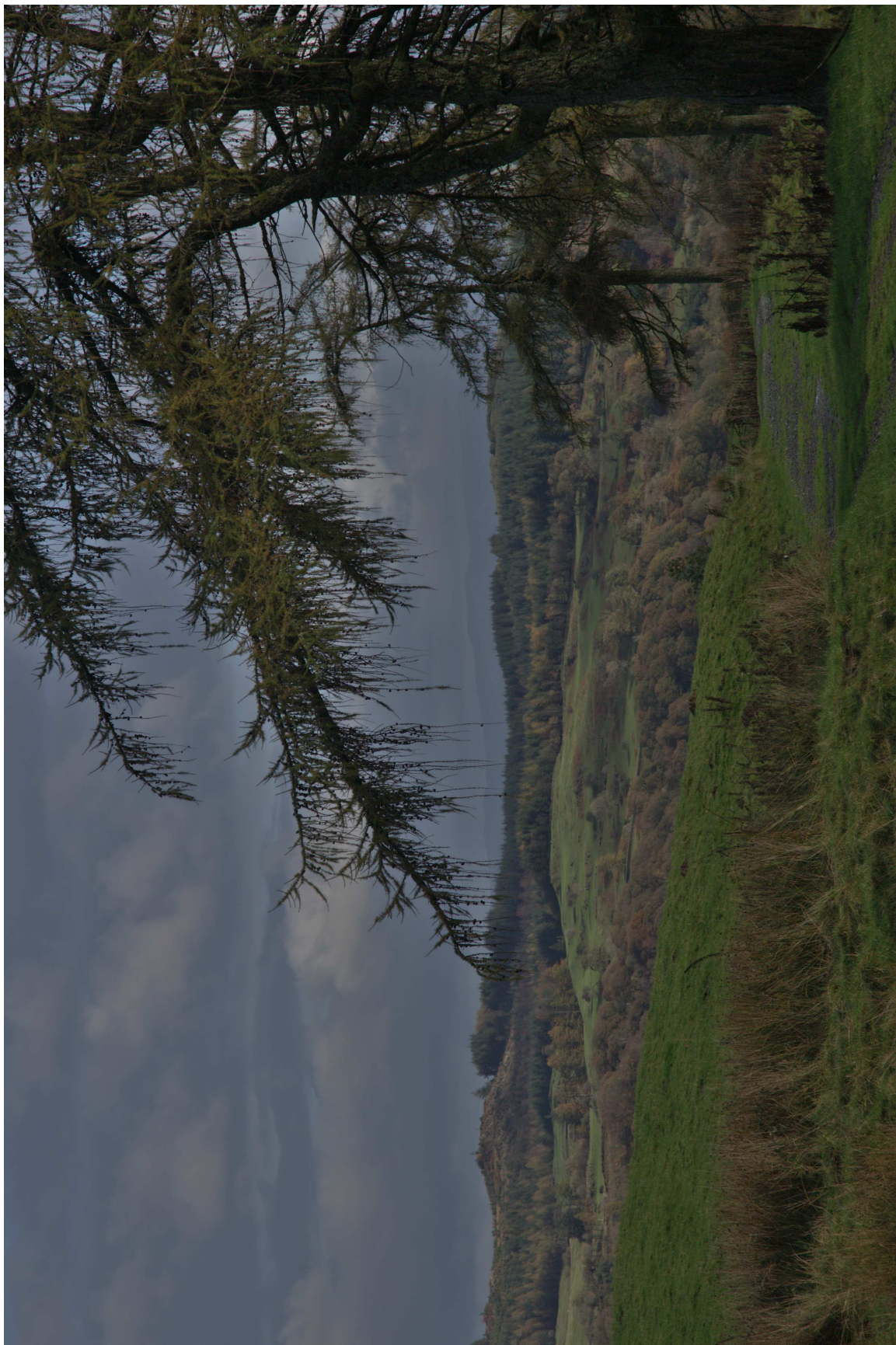
Stand of trees - foot path to the Vicarage.



Stand of trees - footpath to the Vicarage.



Boscage, Sweetenthwaite Hill.



Tree on Hawkshead Moor.



Man, dog and bench.



Hawkshead from Moor Top.



Colthouse Heights from Hawkshead Moor Top.



Esthwaite Water.



The High Fells.



Woods near Roger Ground.



Tree.



Herdwick Sheep.



Herdwick Sheep.



Footpath to Hawkshead in the rain.



Church in the rain.