

Roll: **20221002-9239**

Camera: **Canon EOS 5D Mark III: E53**

Film: **Full frame digital**

Subject:

Angles project for the U3A

Notes:

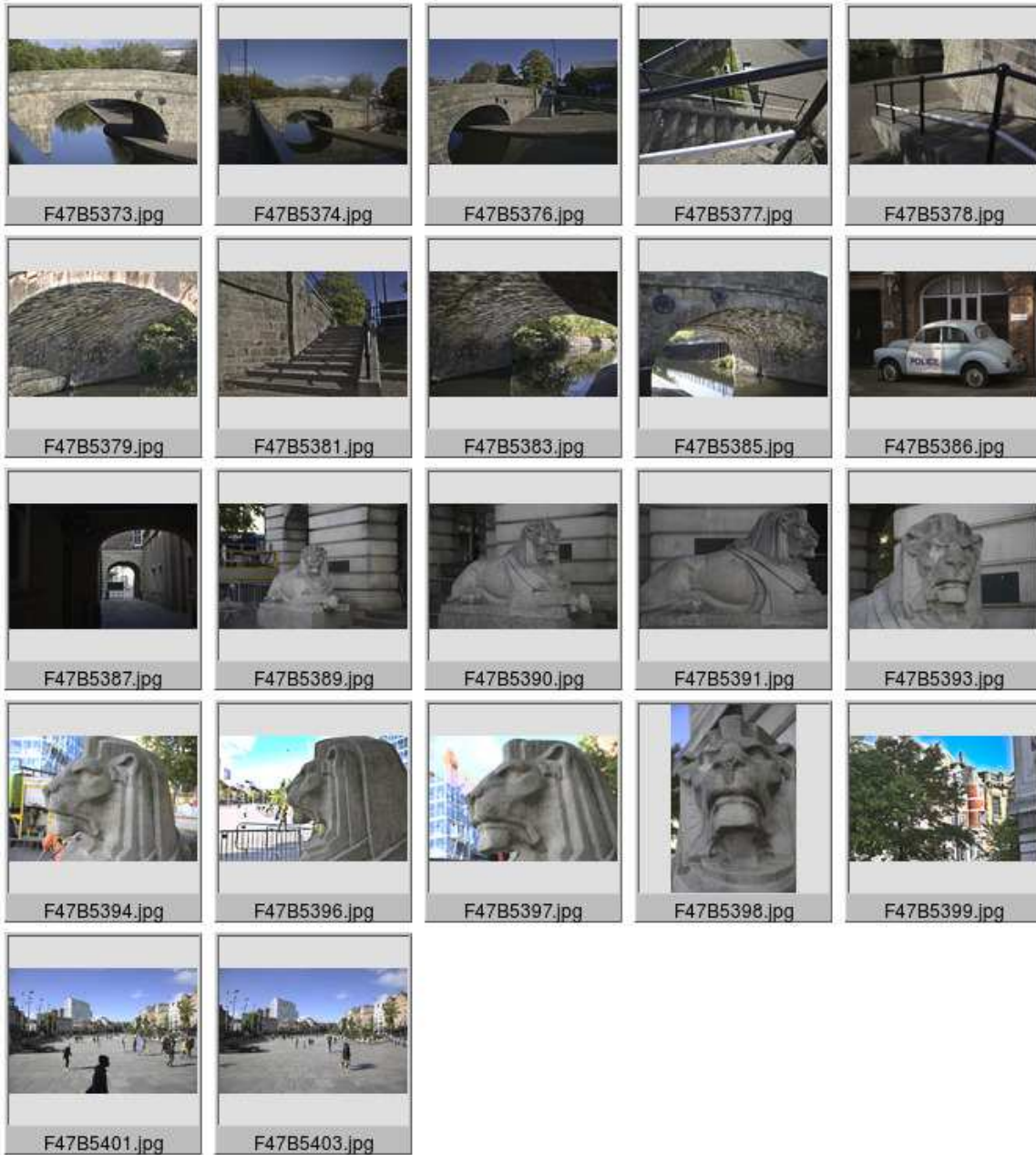
The reflections under Meadow Lane canal bridge were quite remarkable. I was intent on taking pictures at dramatic angles from the Council House steps but there were a lot of barriers out while operatives put up banners on the balcony. As a consequence I had to return another day, still some of these I think are quite remarkable and could well justify that expensive printer.

Dates:

Dates and times are verified from original exif data.

Frames:

F47B5373 20221002 09:47:32 Canal bridge.
F47B5374 20221002 09:47:45 Canal bridge.
F47B5376 20221002 09:48:42 Canal bridge and steps.
F47B5377 20221002 09:49:50 Canal steps.
F47B5378 20221002 09:50:32 Canal steps.
F47B5379 20221002 09:51:02 Reflections on a bridge.
F47B5381 20221002 09:52:25 Canal steps.
F47B5383 20221002 09:52:53 Canal reflections from under a bridge.
F47B5385 20221002 09:53:49 Canal reflections from under a bridge.
F47B5386 20221002 10:22:16 Police car 1960s.
F47B5387 20221002 10:26:46 Exit.
F47B5389 20221002 10:40:36 Works and a lion.
F47B5390 20221002 10:40:55 Lion.
F47B5391 20221002 10:41:16 Lion.
F47B5393 20221002 10:46:31 Lion's head.
F47B5394 20221002 10:47:02 Lion's head.
F47B5396 20221002 10:47:55 Lion's head and slab square.
F47B5397 20221002 10:48:25 Lion's head..
F47B5398 20221002 10:50:05 Lion's head..
F47B5399 20221002 10:56:48 Long Row.
F47B5401 20221002 10:59:34 Silhouette in slab square looking West.
F47B5403 20221002 10:59:43 Return to slab square looking West.





F47B5373 - Canal bridge.



F47B5377 - Canal steps.



F47B5378 - Canal steps.



F47B5381 - Canal steps.



F47B5383 - Canal reflections from under a bridge.



F47B5385 - Canal reflections from under a bridge.



F47B5386 - Police car 1960s.



F47B5394 - Lion's head.



F47B5397 - Lion's head.



F47B5399 - Long Row.



F47B5401 - Silhouette in slab square looking West.